



# Forest Management Certification Information

## Long-term Sustainability Management Commitment Policy

### Commitment Statement on Adherence to Sustainability Principles

On behalf of the founders of Green Value Management, we express our commitment to sustainable land management practices that align with sustainable forest management principles and criteria. Moreover, we recognize the vital importance of responsible forest management in pursuing balance between economic viability, environmental conservation and social equity.

### Long-Term Commitment

Green Value Management is dedicated to the long-term adherence to sustainability principles and criteria across all our management units in the scope of the certification. This commitment extends to ensuring that our operations are not only compliant with sustainable forestry policies and standards but also contribute positively to the sustainability of the forests under our care.

## Green Value Management Principles

- **Ecosystem-Centric Management:** Forests are ecosystems, not production machines. We adopt a holistic management approach.
- **Nature-Prioritized Investment:** Our primary investment is in nature, ensuring harmony with the economy.
- **Sustainable Asset Management:** Adopting long-term strategies that benefit forest ecosystems, our clients and our team.
- **Science-Driven Transparency:** Committed to accurate measurement and transparency using the latest in science & technology.

**We Rethink Forestry:** To us, forests are more than the sum of their logged trees. We manage and monitor the ecosystems to sustain vitality and monetize services, resulting in a multi-income forest with increased output and resilience.

## Green Value Management Forest Management Goals and Values



- **Sustainable Harvesting:** Timber is harvested at sustainable rates to achieve climate resilient forests. Prioritizing commercial thinning's to maintain forest health and productivity.
- **Production of High-Quality Forest Products:** By implementing selective logging, silviculture methods, using advanced technologies, and preserving biodiversity, the quality of the timber is maximized, ensuring long-term forest yield.
- **Biodiversity Management:** Protecting and promoting a diverse range of plant and animal species within the forest ecosystem including larger ecological landscape connectivity. GVM collaborates with various companies and specialists to enhance sustainable forest management.
- **Forest Health Prioritization:** Developing and implementing action plans to reduce the risk of natural hazards and manage the forests where it benefits ecological and forest health to build the most sustainable future forest structure.
- **Ecosystem Services Management:** Maximizing the benefits forests provide, such as clean air, water filtration, and recreational opportunities. Enhancing the forest's capacity to absorb and store carbon, contributing to climate change mitigation.
- **Community Involvement:** Appropriate involvement with local stakeholder when applicable to forest management activities and approaches.
- **Economic Viability:** Balancing ecological goals with the economic needs of the forestry sector to ensure long-term sustainability and profitability.

## **Green Value Management Anti-Corruption Policy**

Green Value Management is firmly committed to upholding the highest standards of integrity and ethical behavior in all aspects of our operations. As part of this commitment, we adhere to a strict anti-corruption policy that ensures compliance with the anti-corruption legislation effective in Nova Scotia, Canada, and beyond.

### **Zero Tolerance for Bribery and Prohibition of Corrupt Practices**

We explicitly prohibit bribery and corruption practices in any form. We expect all our employees and partners to conduct business with us honestly and with integrity, ensuring that all interactions are free from corrupt practices.

### **Corrective Measures**

In the event that any act of corruption is identified, Green Value Management will implement immediate corrective measures. This includes a thorough investigation, disciplinary action against those involved, and the establishment of stronger safeguards to prevent future occurrences.

## Equality Policy

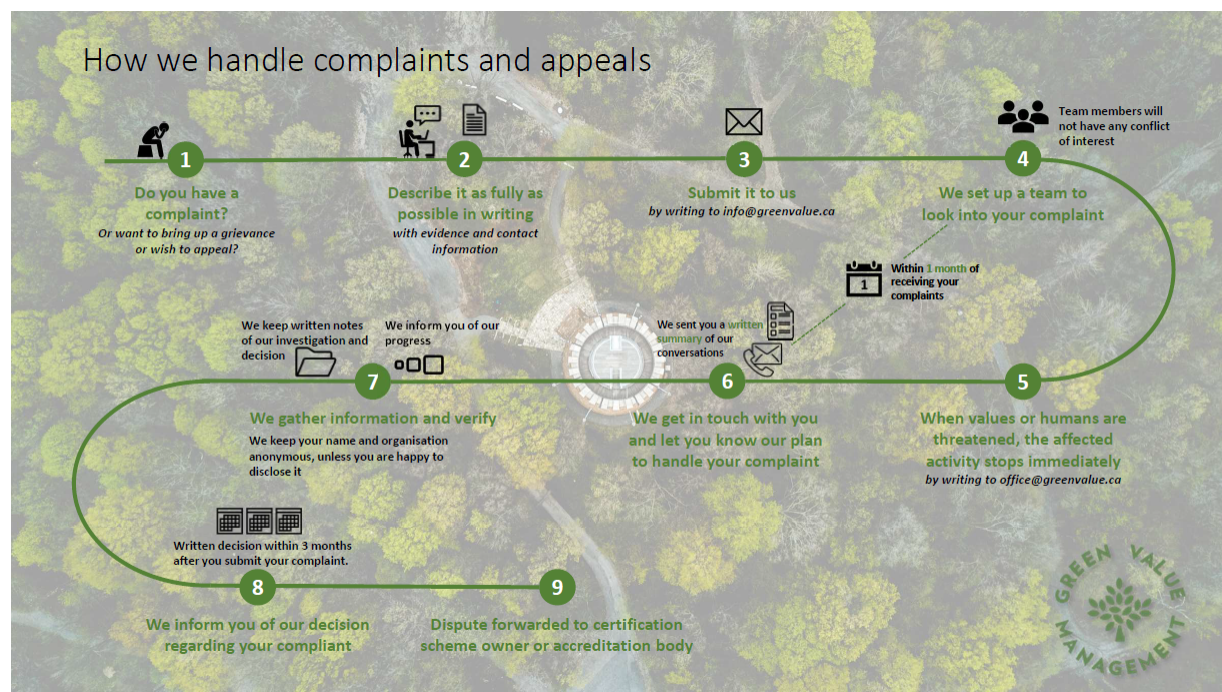
### Green Value Management Gender Equality Statement

At Green Value Management, we are committed to promoting and upholding gender equality in all aspects of our operations. We recognize that a diverse and inclusive workforce enhances our ability to achieve our goals and fosters a more innovative and productive environment.

### Commitment to Gender Equality

Green Value Management ensures that gender equality is a cornerstone of our employment practices, training opportunities, contract awards, engagement processes, and management activities. We have implemented comprehensive systems to guarantee that all these areas are governed by principles of fairness and equality.

## Conflict Resolution Policy



Further information pertaining to the Green Value Management Forest Management certification can be requested by emailing us at [office@greenvalue.ca](mailto:office@greenvalue.ca)